

9. In this question round your answers to two decimal places. For the function

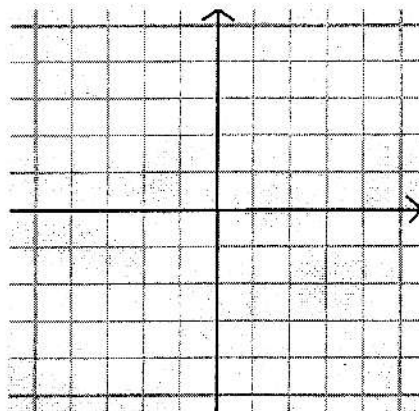
$$f(x) = -0.2x^3 - 0.6x^2 + 4x - 6$$

10

over the interval $(-6, 4)$, use your calculator (with auto zoom?) to (a) draw a rough sketch of the graph of f and to find (b) any local maxima or local minima and (c) the intervals on which it is decreasing.

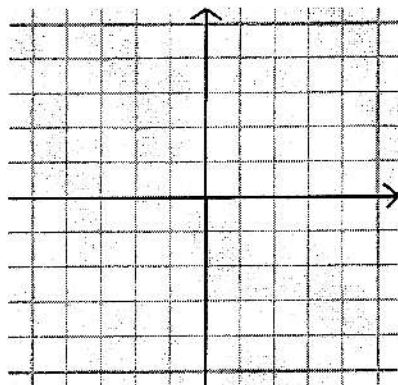
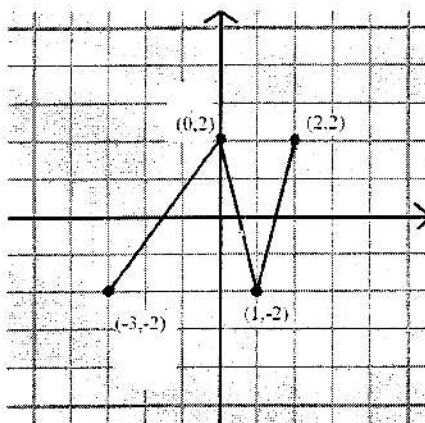
10. Let $f(x) = \begin{cases} -1 - 2x & x \leq -1 \\ x + 1 & x > -1 \end{cases}$. (a) Graph the function f below. (b) What is the range of f ?

8

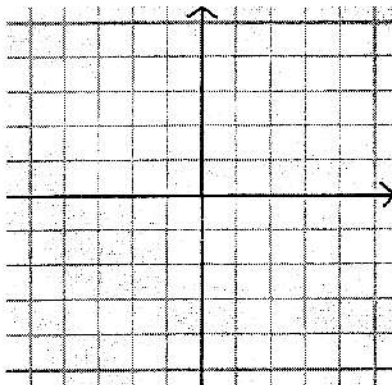


12

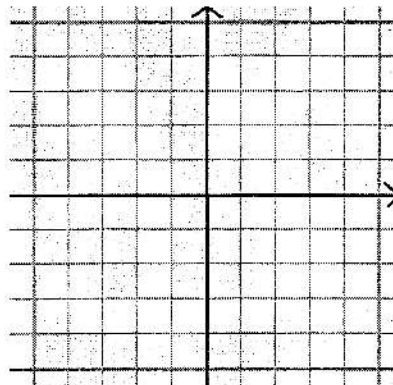
11. The graph of the function f is shown below. Graph the following functions: (a) $y = f(x) - 1$ (b) $y = f(x + 2) + 1$ (c) $y = -f(\frac{1}{2}x)$



(a)



(b)



(c)

30